

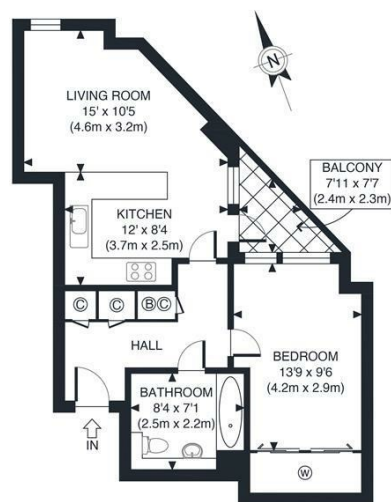
DANCE SQUARE, CLERKENWELL, LONDON, EC1V

1 BED APARTMENT

£2,500 PCM

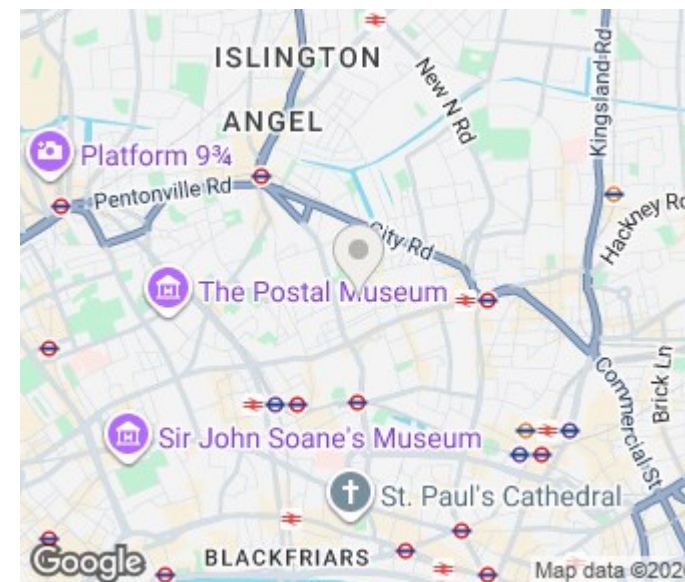
Beautifully presented modern one bedroom 4th floor apartment set within a modern prestigious development Dance Square, within close proximity to Old Street underground station and fashionable Shoreditch. The property offers generous size bedroom with ample storage spaces, open plan kitchen and reception room with floor to ceiling windows and doors leading to balcony with courtyard views. 24/7 concierge.

Hemmingfords



FOURTH FLOOR
GROSS INTERNAL
FLOOR AREA 519 SQ FT

APPROX. GROSS INTERNAL FLOOR AREA 519 SQ FT / 48 SQM	Dance Square
Disclaimer: Floor plan measurements are approximate and are for illustrative purposes only. While we do not doubt the floor plan accuracy and completeness, you or your advisors should conduct a careful, independent investigation of the property in respect of monetary valuation	date 07/08/23
	photoplan



Energy Efficiency Rating		
	Current	Potential
Very energy efficient - lower running costs		
(92 plus) A		
(81-91) B		
(69-80) C	76	76
(55-68) D		
(39-54) E		
(21-38) F		
(1-20) G		
Not energy efficient - higher running costs		
England & Wales	EU Directive 2002/91/EC	

Agents Note: Whilst every care has been taken to prepare these particulars, they are for guidance purposes only. All measurements are approximate and are for general guidance purposes only and whilst every care has been taken to ensure their accuracy, they should not be relied upon and potential buyers/tenants are advised to recheck the measurements

Hemmingfords Lettings
34 Upper Street
London
N1 0PN

020 3890 7470
info@hemmingfords.co.uk
www.hemmingfords.co.uk

Hemmingfords